

REIT  
PERFORMANCE  
REPORT

YTD 31 December 2008

# S-REITs Performance YTD 31 December 08

| SGP | SGD  | Date of Listing  | IPO Price    | 31-Dec-08   |
|-----|--|------------------|--------------|-------------|
| 1   | ALLCO COMMERCIAL REIT*                     | 30-Mar-06        | 1.00         | 0.24        |
| 2   | ASCENDAS INDIA TRUST                       | 1-Aug-07         | 1.18         | 0.46        |
| 3   | ASCENDAS REAL ESTATE INV TRUST             | 19-Nov-02        | 0.88         | 1.37        |
| 4   | ASCOTT RESIDENCE TRUST                     | 31-Mar-06        | 0.68         | 0.58        |
| 5   | CAMBRIDGE INDUSTRIAL TRUST                 | 25-Jul-06        | 0.68         | 0.28        |
| 6   | CAPITACOMMERCIAL TRUST                     | 11-May-04        | 1.38         | 0.90        |
| 7   | CAPITAMALL TRUST                           | 17-Jul-02        | 0.96         | 1.59        |
| 8   | CAPITARETAIL CHINA TRUST                   | 8-Dec-06         | 1.13         | 0.60        |
| 9   | CDL HOSPITALITY TRUSTS                     | 19-Jul-06        | 0.83         | 0.73        |
| 10  | FIRST REAL ESTATE INV TRUST                | 11-Dec-06        | 0.71         | 0.41        |
| 11  | <b>FORTUNE REAL ESTATE INV TRUST (SGD)</b> | <b>12-Aug-03</b> | <b>0.876</b> | <b>0.37</b> |
| 12  | FRASERS CENTREPOINT TRUST                  | 5-Jul-06         | 1.03         | 0.63        |
| 13  | K-REIT ASIA                                | 28-Apr-06        | 1.04         | 0.70        |
| 14  | LIPPO-MAPLETREEINDORETAIL TRUST            | 19-Nov-07        | 0.80         | 0.31        |
| 15  | MACARTHURCOOK INDUSTRIAL REIT              | 19-Apr-07        | 1.20         | 0.26        |
| 16  | MACQUARIE MEAG PRIME REIT**                | 20-Sep-05        | 0.98         | 0.52        |
| 17  | MAPLETREE LOGISTICS TRUST                  | 28-Jul-05        | 0.68         | 0.35        |
| 18  | PARKWAYLIFE REIT                           | 23-Aug-07        | 1.28         | 0.76        |
| 19  | SAIZEN REAL ESTATE INV TRUST               | 9-Nov-07         | 1.00         | 0.13        |
| 20  | SUNTEC REAL ESTATE INV TRUST               | 9-Dec-04         | 1.00         | 0.71        |
|     |  |                  |              |             |
|     | <b>FORTUNE REAL ESTATE INV TRUST (HKD)</b> |                  | <b>4.75</b>  | <b>1.99</b> |
|     |  | Exchange Rate    |              |             |
|     |  | S\$1 = HK\$      | 5.419696     |             |

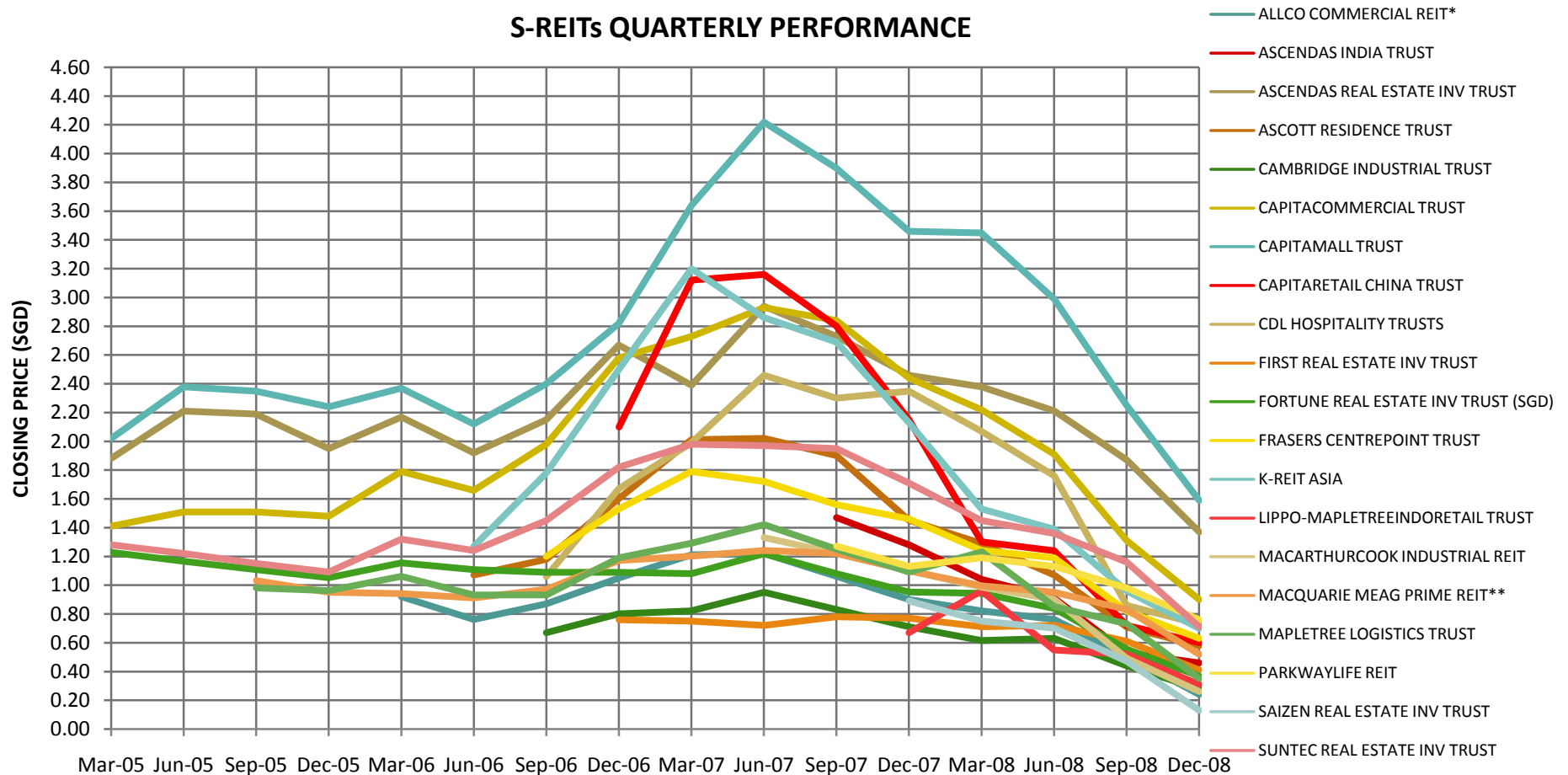
\*Now known as Frasers Commercial Trust

\*\*Now known as Starhill Global REIT

Source: [www.sgx.com](http://www.sgx.com); [www.hkex.com.hk](http://www.hkex.com.hk); [www.shareinvestor.com.my](http://www.shareinvestor.com.my); <http://investing.businessweek.com/research/company/overview/overview.asp>

# S-REITs Performance YTD 31 December 08

## S-REITs QUARTERLY PERFORMANCE



\*Now known as Frasers Commercial Trust

\*\*Now known as Starhill Global REIT

Source: [www.sgx.com](http://www.sgx.com); [www.hkex.com.hk](http://www.hkex.com.hk); [www.shareinvestor.com.my](http://www.shareinvestor.com.my); <http://investing.businessweek.com/research/company/overview/overview.asp>

# Malaysian REITs Performance YTD 31 December 08

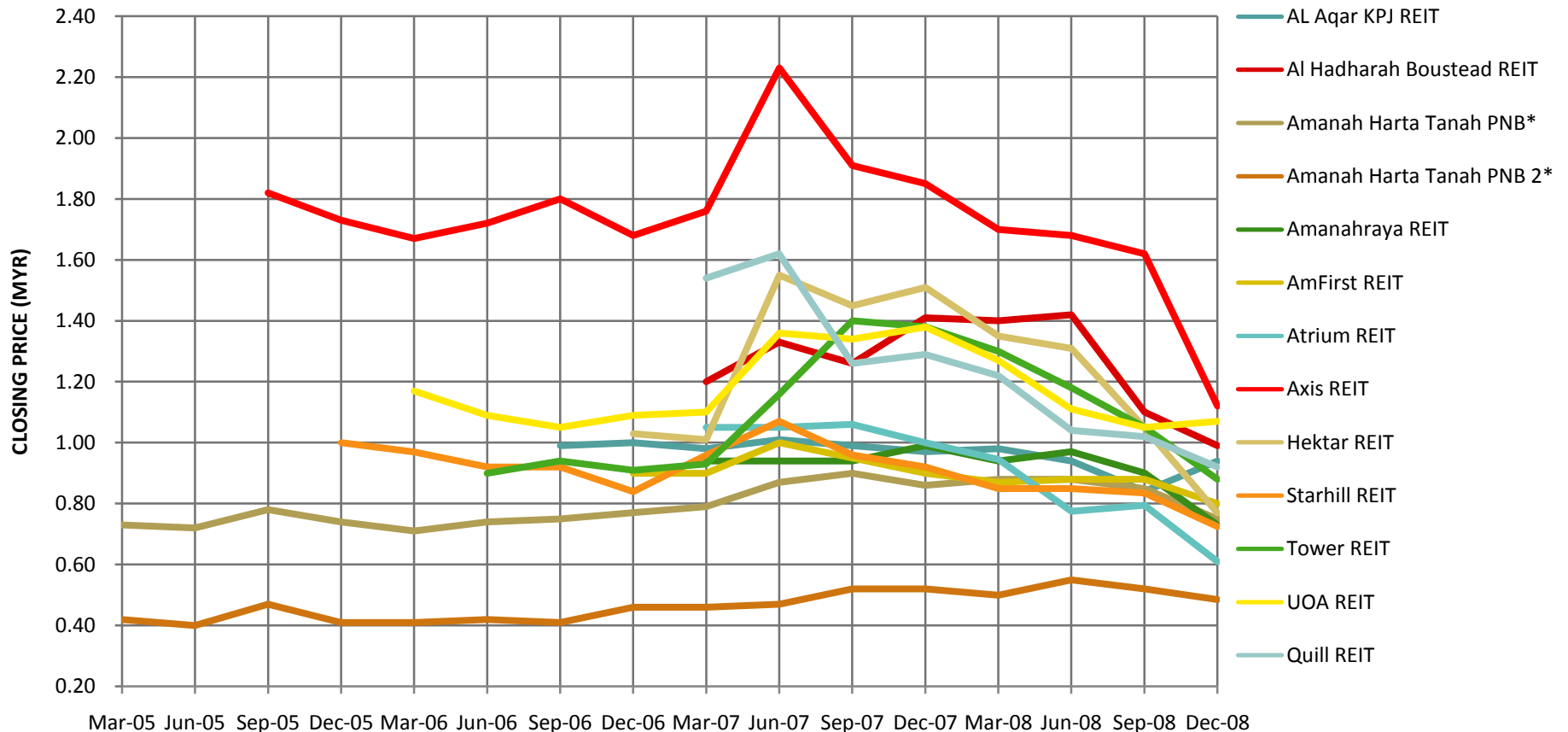
| MSIA | MYR                       | Date of Listing | IPO Price | 31-Dec-08 |
|------|---------------------------|-----------------|-----------|-----------|
| 1    | AL AQAR KPJ REIT          | 10-Aug-06       | 0.95      | 0.94      |
| 2    | AL HADHARAH BOUSTEAD REIT | 8-Feb-07        | 0.99      | 0.99      |
| 3    | AMANAH HARTA TANAH PNB*   | 28-Dec-90       |           | 0.75      |
| 4    | AMANAH HARTA TANAH PNB 2* | 25-Mar-97       |           | 0.49      |
| 5    | AMANAHRAYA REIT           | 26-Feb-07       | 0.94      | 0.73      |
| 6    | AMFIRST REIT              | 20-Dec-06       | 1.00      | 0.80      |
| 7    | ATRIUM REIT               | 26-Mar-07       | 1.05      | 0.61      |
| 8    | AXIS REIT                 | 3-Aug-05        | 1.25      | 1.12      |
| 9    | HEKTAR REIT               | 4-Dec-06        | 1.05      | 0.77      |
| 10   | STARHILL REIT             | 16-Dec-05       | 0.96      | 0.73      |
| 11   | TOWER REIT                | 12-Apr-06       | 1.07      | 0.88      |
| 12   | UOA REIT                  | 30-Dec-05       | 1.15      | 1.07      |
| 13   | QUILL REIT                | 8-Jan-07        | 0.84      | 0.92      |

\* IPO Price unavailable

Source: [www.sgx.com](http://www.sgx.com); [www.hkex.com.hk](http://www.hkex.com.hk); [www.shareinvestor.com.my](http://www.shareinvestor.com.my); <http://investing.businessweek.com/research/company/overview/overview.asp>

# Malaysian REITs Performance YTD 31 December 08

## MALAYSIAN REITs QUARTERLY PERFORMANCE



\* IPO Price unavailable

Source: [www.sgx.com](http://www.sgx.com); [www.hkex.com.hk](http://www.hkex.com.hk); [www.shareinvestor.com.my](http://www.shareinvestor.com.my); <http://investing.businessweek.com/research/company/overview/overview.asp>

# Hong Kong REITs Performance YTD 31 December 08

| HK | HKD                          | Date of Listing | IPO Price | 31-Dec-08 |
|----|------------------------------|-----------------|-----------|-----------|
| 1  | Champion REIT                | 24-May-06       | 5.100     | 2.08      |
| 2  | GZI REIT                     | 21-Dec-05       | 3.075     | 1.79      |
| 3  | Prosperity REIT              | 16-Dec-05       | 2.160     | 0.90      |
| 4  | Regal REIT                   | 30-Mar-07       | 2.680     | 0.97      |
| 5  | RREEF China Commercial Trust | 22-Jun-07       | 5.150     | 2.64      |
| 6  | Sunlight REIT                | 21-Dec-06       | 2.600     | 1.40      |
| 7  | The Link REIT                | 25-Nov-05       | 10.300    | 12.80     |

# Hong Kong REITs Performance YTD 31 December 08

HONG KONG REITs QUARTERLY PERFORMANCE

